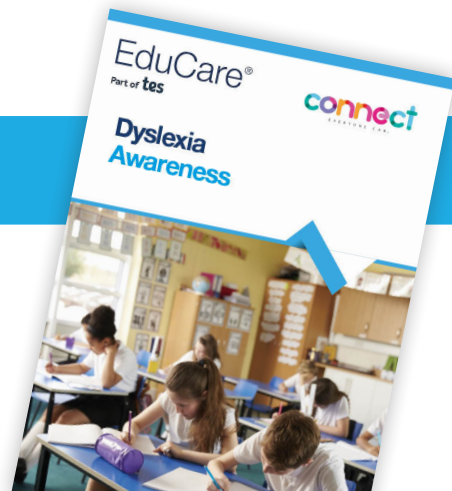


Dyslexia Awareness

Written in partnership with SEND specialists, Connect, this course provides an overview of dyslexia and visual stress for those that work with children and young people. It highlights how dyslexia can affect learning and gives some practical tips to help support those who have dyslexia.



Key features

- One module with a multiple choice questionnaire.
- One CPD hour with a personalised downloadable certificate.
- 70% pass mark.
- Written in partnership with experts at Connect.
- Optional narration of the module for accessibility.
- Additional resources for further learning and printable module for future reference.

Course objectives

After completing this course you will:

1. Understand that dyslexia is one of several specific learning difficulties (SpLDs).
2. Understand more about dyslexia and visual stress and what causes them.
3. Learn about the prevalence of dyslexia and how to diagnose it.
4. Understand the ways that dyslexia can affect learning.
5. Understand how to report concerns about dyslexia.
6. Learn some practical tips to support those with dyslexia.



Why choose us?

“EduCare have been our primary provider of online training since October 2014. We feel that the EduCare product is engaging, current, well presented and sufficiently detailed, whilst their customer services are responsive and supportive.”

Reza Mosavian

Head of Learning Technologies, Solihull College & University Centre Endowed School

